



# Timeline Tuesday

## Data Snapshot: Health Coverage

Mary Joan McDuffie

Rebecca King

Lolita Lopez

Dr. Karla Testa

George Meldrum

**25 YEARS** OF COUNTING  
DELAWARE KIDS



## Data Overview

Mary Joan McDuffie

## Community Perspective Panelists

Rebecca King

Lolita Lopez

Dr. Karla Testa

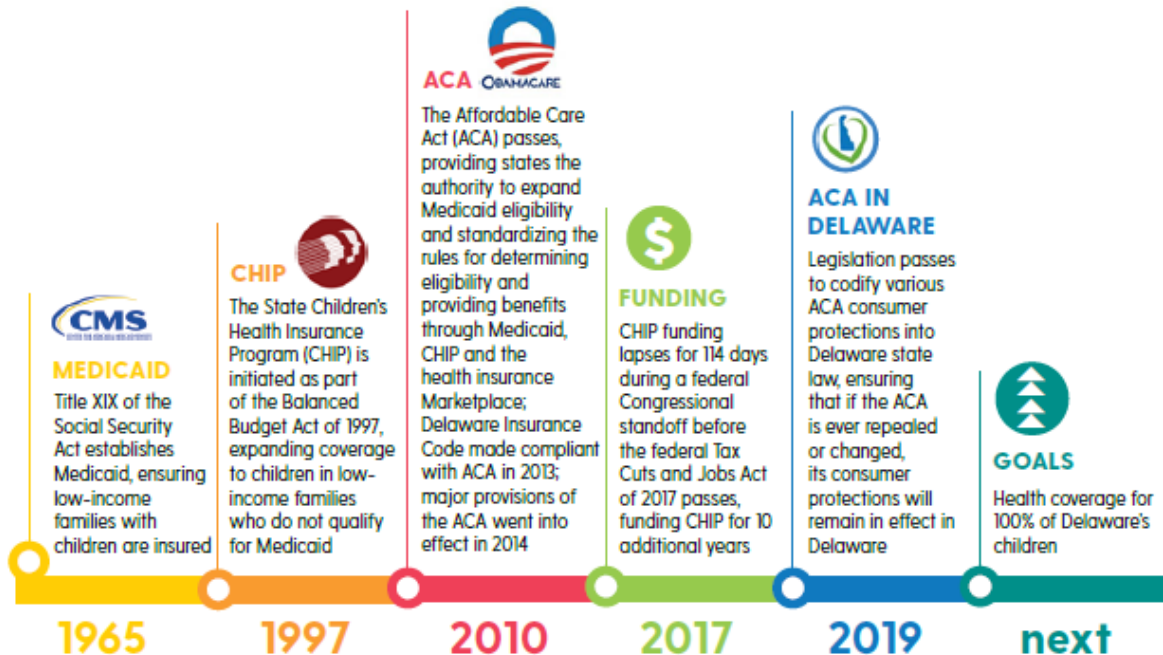
George Meldrum

# 25 YEARS OF COUNTING DELAWARE KIDS

HONORING OUR PAST,  
BUILDING KIDS' FUTURES  
**25 YEARS**

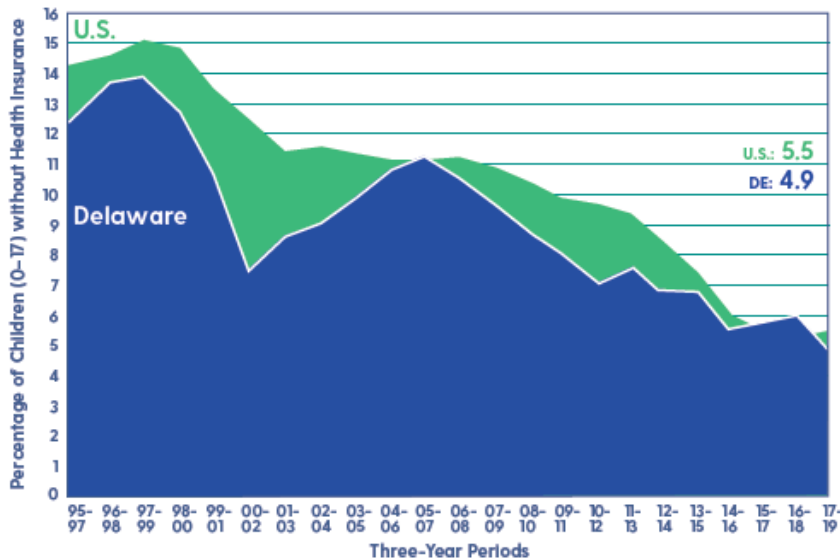


## HEALTH COVERAGE TIMELINE





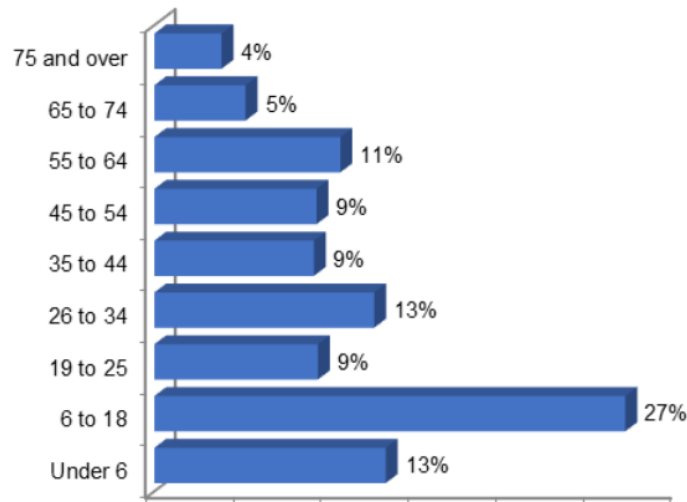
## CHILDREN WITHOUT HEALTH INSURANCE Delaware Compared to U.S.



Source: Current Population Survey, provided by Center for Applied Demography and Survey Research, University of Delaware



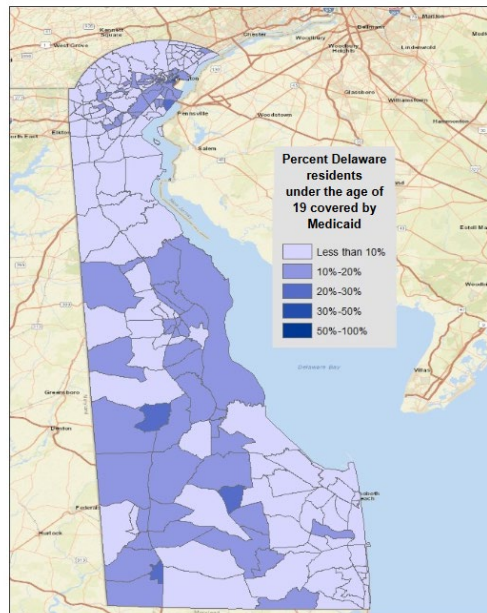
## Medicaid Enrollment by Age Group, Fiscal Year 2018



Source: UD Center for Community Research and Service, 2020; data from American Community Survey, 2018, 1 Year Estimates



## Percent Covered by Medicaid <19 2014-2018 Average



Source: UD Center for Community Research and Service, 2020, data from U.S. Census Bureau, 2014-2018 American Community Survey

## Challenges

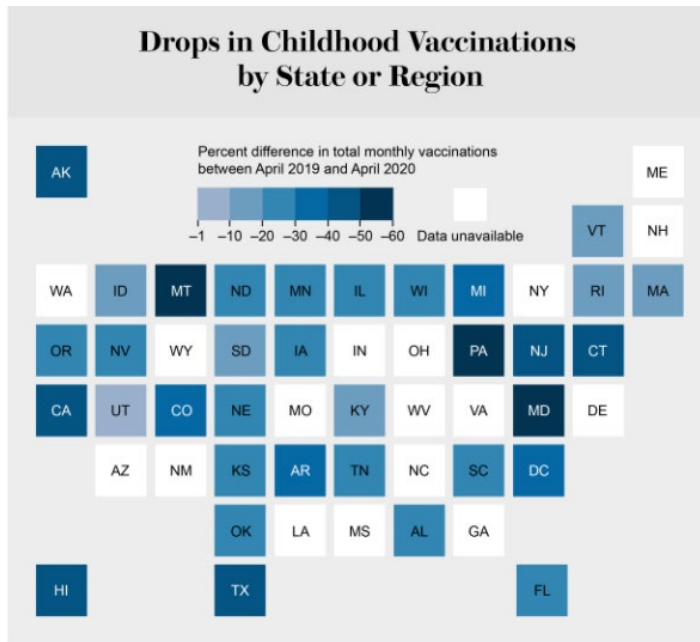
- COVID-19
  - Disruption of both the formal/informal systems that generally identify and respond to children's risks
  - Social determinants of health
  - Health utilization/access





## Vaccinations

- Based on April data.
- Data since April seems to show some rebound.



Daley, Jim. "Vaccinations have declined nationwide during the COVID-19 pandemic" *Scientific American*, July 8, 2020. <https://www.scientificamerican.com/article/vaccinations-have-sharply-declined-nationwide-during-the-covid-19-pandemic/>

## Lead Testing

- Upper Midwest, Northeast and parts of the West Coast
- 50% decline between Spring 2019 and Spring 2020
- Michigan – 75% decline



<https://www.medscape.com/viewarticle/937251>; 9/11/2020

## FFCRA and CARES

- Families First Coronavirus Response Act (FFCRA)
  - increases temporarily the Federal Medicaid Matching rate (FMAP) by 6.2 percentage points for all states
- Coronavirus Aid, Relief, and Economic Security Act (CARES Act), March 27, 2020
  - states cannot terminate Medicaid coverage for beneficiaries for failure to pay premiums and still get the temporary increase in FMAP

## Increased Medicaid Enrollment

- States report increases in total Medicaid enrollment over the three-month period from the beginning of March to the beginning of June.
- Great Recession – non-elderly adults increased 1.3%; CHIP rose by 4.8%.
- States experiencing deficits; increased enrollment will stress state budgets

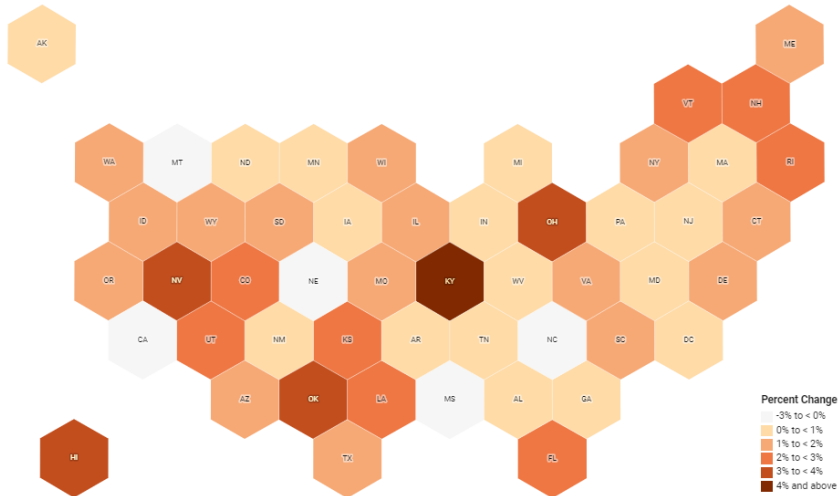
*Health Affairs, August 2020.*

<https://www.healthaffairs.org/doi/10.1377/hlthaff.2020.00900#:~:text=All%20states%20reported%20increases%20in,to%20the%20beginning%20of%20June.&text=All%20states%20saw%20enrollment%20increase,of%20more%20than%20six%20percent>



## Most States Recorded a Jump in Medicaid Enrollment

New federal data shows how enrollment changed from the beginning of March to April. Kentucky showed the largest rate of growth and only five states did not see an increase.

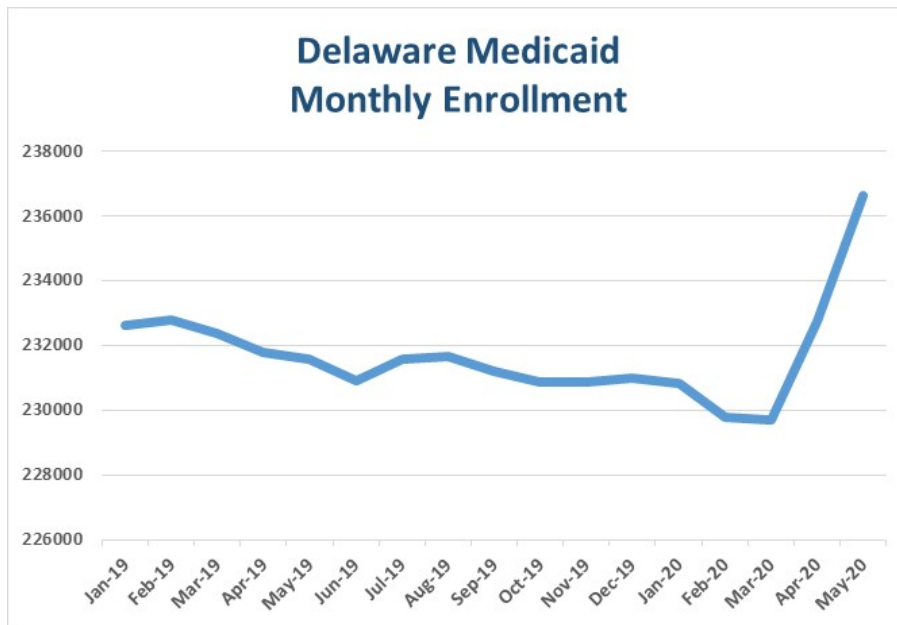


Note: Data was reported on March 1 and April 1. The April 1 data is preliminary.

Map by Lydia Zuraw/Kaiser Health News

Source: Medicaid.gov - Map data: Telegrams/NPR - Embed

Kaiser Family Foundation, 2020. <https://khn.org/news/the-covid-19-downturn-triggers-jump-in-medicaid-enrollment/>



CCRS, 2020; produced from data from data.Medicaid.gov monthly enrollment

## Telehealth

- Expanding populations
- Allowing new services
- Payment rates and cost sharing
- Broadening provider types to deliver services



<https://www.kff.org/coronavirus-covid-19/issue-brief/state-efforts-to-expand-medicaid-coverage-access-to-telehealth-in-response-to-covid-19/>



## Telehealth

- *Delaware Medicaid covers telehealth for most services/providers*
- *Now allows 2-way “real time” and telephonic*
- *The patient must be informed and given an opportunity to request an in-person assessment before receiving a telehealth assessment.*



[https://dhss.delaware.gov/dhss/dmma/files/dmma\\_telehealth\\_bulletin\\_COVI\\_19.pdf](https://dhss.delaware.gov/dhss/dmma/files/dmma_telehealth_bulletin_COVI_19.pdf)



## Telehealth

- *Plus – in a time of pandemic, keeps patients/providers safe*
- *Negative – internet connectivity issues, privacy, certain services don't “work” over telehealth*



[https://dhss.delaware.gov/dhss/dmma/files/dmma\\_telehealth\\_bulletin\\_COVI\\_19.pdf](https://dhss.delaware.gov/dhss/dmma/files/dmma_telehealth_bulletin_COVI_19.pdf)

**25 YEARS** OF COUNTING  
DELAWARE KIDS



## Mary Joan McDuffie, MA

Medicaid Research Program Director  
Center for Community Research & Service  
Biden School of Public Policy & Administration

[mcduffie@udel.edu](mailto:mcduffie@udel.edu) | 302-831-3788

[www.dekidscount.org](http://www.dekidscount.org)

